



epoc[®] Host² Quick Start Guide

This quick start guide provides first time setup instructions and other useful instructions for the epoc[®] Host² (Motorola MC55-A0). For complete user instructions, please refer to the epoc[®] System Manual.

epoc[®] Host² Components

Barcode Scan LED

- Barcode scanning active
- ⏏ Successful scan/capture (blinking)

Charging/Battery LED

- Battery fully charged
- ⏏ Battery charging (blinking)
- ⏏ Charging error (fast blink)

Barcode Scanner

Radio Status LED (NOT USED!)

Scan Button(s)

Scan Button (on side)

Touch Screen (with screen protector)

Keypad

Power Button

Learn more

Cradle Blade



epoc® Host² Numeric Keypad

- **Power Button** turns device on and off. Holding the **Power Button** for 5 seconds will reset the device.
- **Scan Key** (and Scan Buttons on sides of Host) activates the barcode scanner.
- **Alphanumeric Keys** default to numeric values. Pressing the **Toggle Key** allows entry of alpha characters. (Key is illuminated and orange symbol appears on display when active). Pressing the **Toggle Key** again returns key functions to numeric values.
- **Tab & Enter Keys** navigate to the next editable field.

- **Backspace Key** (BKSP) deletes entered characters.

*Note: Keys that have been crossed over are **not active***



Prior to Use...

Step 1: Charge the epoc® Host²

Before using the epoc® Host², charge its battery as follows:

1. Connect the epoc® Reader power supply to the power jack on the back of the Reader.
2. Insert the epoc® Host² into the epoc® Reader's pivot slot as shown. The initial charge will take approximately eight hours.
 - A blinking Amber battery LED shows that the epoc® Host² is charging.
 - A solid Amber battery LED shows that the epoc® Host² is fully charged.



Learn more 

For facilities not using an epoc® Data Management System, *skip steps 2 and 3.*

Step 2: Connect to your Wi-Fi Network

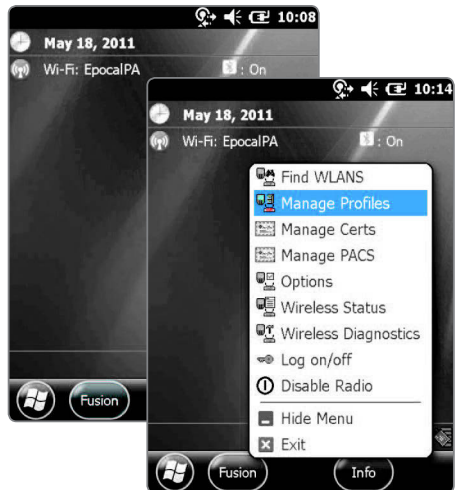
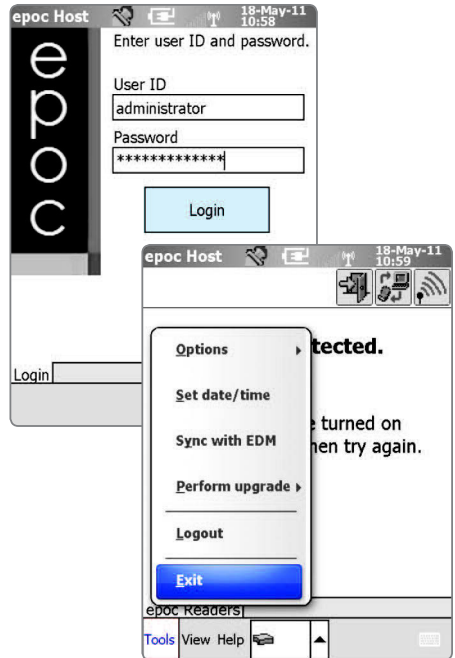
NOTE: It may be necessary to contact your facility's Information Technology department to obtain the proper Wireless connection and security settings.

1. Run **Motorola Wireless Fusion**.

- Turn on the epoc® Host² by pressing the power button.
- At the login screen, scan or enter the word “**administrator**” into the User ID and Password fields.
- To scan, aim the Barcode Scanner at the barcode and press the **Scan Key**.



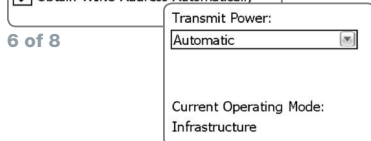
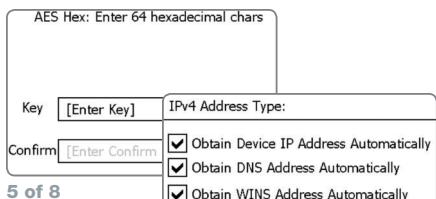
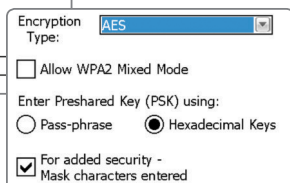
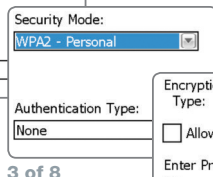
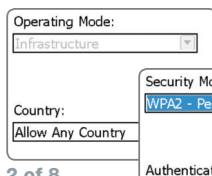
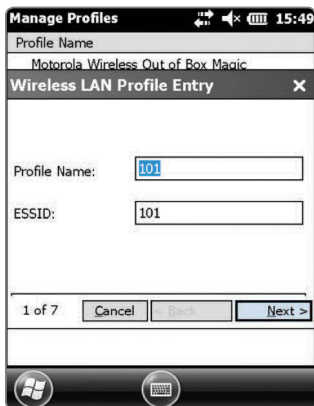
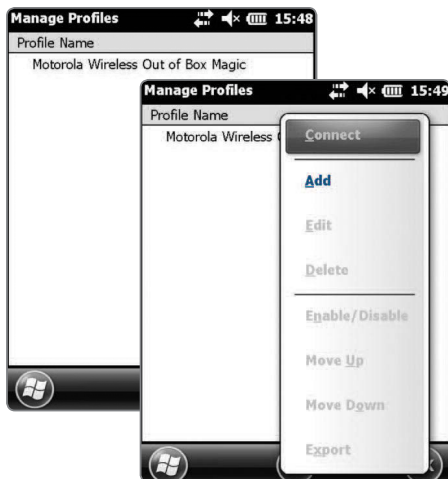
- Exit the epoc® Host² application by tapping “**Tools**,” then “**Exit**” from the menu.
- Tap the “**Fusion**” on-screen icon to configure the Wireless network profile.
- Select “**Manage Profiles**” from the Fusion menu.



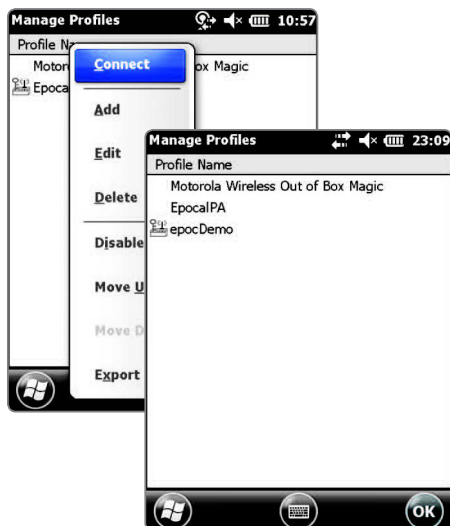
For facilities not using an epoc® Data Management System, skip steps 2 and 3.

Step 2 (continued): Configure the Wi-Fi Network Profile

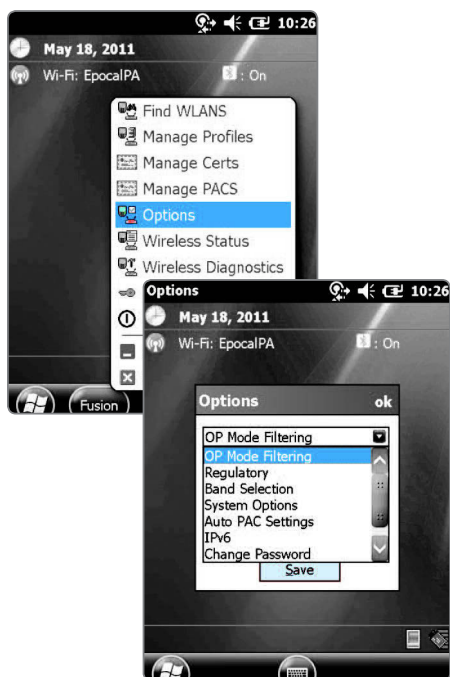
- Tap and hold the screen to bring up the menu; then tap on **“Add.”**
- Enter correct Profile Name and Network Name (ESSID), and then tap **“Next.”**
- Continue entering the correct network security settings on the screens that follow (screens 2-8) by tapping **“Next,”** then **“Save.”**



- When finished, tap and hold on the network name, then tap “**Connect.**”
- Tap “**OK**” on bottom of the screen to return to the “**Today**” screen



- If required, tap on the “**Fusion**” icon and select “**Options**” to configure the appropriate wireless network options.





2. Reset the epoc® Host:²


- Perform a **warm reset** by holding down the  power button for 5 seconds.

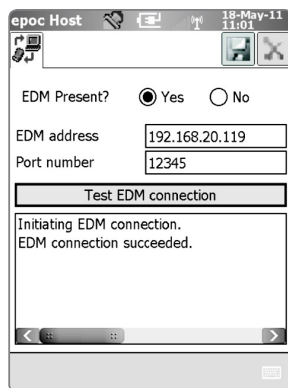
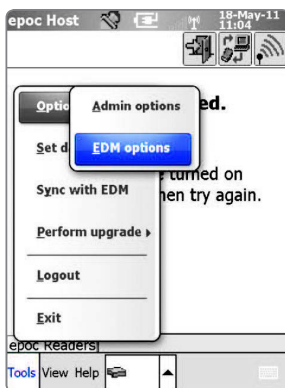
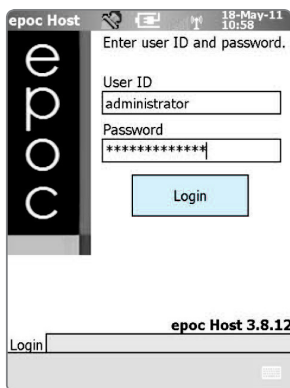
For facilities not using an epoc® Data Management System, skip steps 2 and 3.

Step 3: Connect to the epoc® Data Manager (EDM)

1. Configure EDM options

- Turn on the epoc® Host² by pressing the  power button.
- At the login screen, scan or enter the word “**administrator**” into the User ID and Password fields. (Set date and time if prompted)
- To scan, aim the Barcode Scanner  at the barcode and press the **Scan Key**.

- Select “**Tools**” then “**Options**,” then “**EDM Options**” from the menu.
- Set “**EDM Present?**” to “**YES**,” and enter the correct EDM address and port number, then tap the  disk symbol.



2. Confirm EDM Connection

- Tap the “**Test EDM connection**” button to confirm a successful EDM connection.

Your epoc® Host² is now ready for use.


Note: Refer to the epoc® System Manual for instructions on updating the epoc® Host Software.

Note: Before placing this unit into service, consult your facility's internal quality control procedures and regulatory requirements.

Resetting the epoc® Host²

There are two reset functions – **warm reset** and **cold reset**. In the rare event that the epoc® Host² stops responding or is not functioning properly, perform a warm reset. If the epoc® Host² still does not respond, perform a cold reset.

Data will not be lost with either procedure, which takes approximately one minute.

- Perform a **warm reset** by holding down the  power button for 5 seconds.
- Perform a **cold reset** by simultaneously holding down the power button, the “1” key and the “9” key, and then release.

Removing or replacing the Screen Protector

A screen protector has been applied to the epoc® Host² to minimize wear and tear to the device. To remove the screen protector, lift the corner using a thin plastic card (such as credit card), then carefully lift it off the display. To install a new screen protector, refer to the instructions included with the replacement screen protector.



Installing the Cradle


In the event that the cradle becomes separated from the epoc® Host², position the cradle as shown, and press the two together until both cradle locking tabs snap into the pockets on the side of the Host.



How to install or replace the microSD Card on the epoc® Host²

The SD card slot is located on the back of the epoc® Host² under the battery compartment.

(Note: It is not necessary to remove the plastic cradle.)

1. Press and release the  power button to suspend the epoc® Host².
2. Use your finger or stylus to slide the battery latch to the right releasing the battery. The battery ejects slightly.
3. Lift the battery from the device.
4. Lift the rubber access door and slide SIM card holder door to unlock.
5. Lift SIM card holder door then lift the microSD card holder door.
6. If removing microSD card, simply remove the microSD card from holder.
7. Insert the microSD card, with gold bars facing out, into the card holder door ensuring that the card slides into the holding tabs on each side of the door.
8. Then close microSD card door and slide SIM card holder door to lock position.
9. Close rubber access door.
10. Insert the battery; bottom first, into the battery compartment in the back of the epoc® Host².
11. Press the battery down into the battery compartment until the battery release latch snaps into place.

Battery Release Latch

Battery

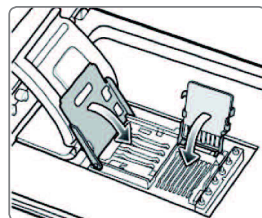
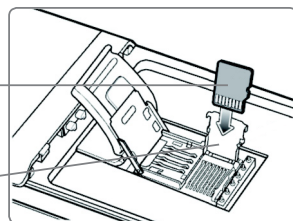
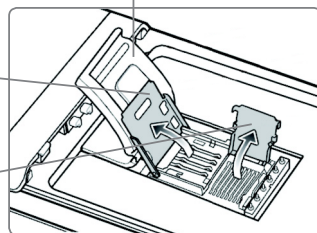
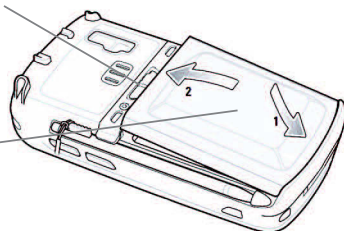
Rubber access door

SIM card holder door

microSD card door

microSD card

Holding tab



Note: To upgrade the epoc® Host² software from an SD card, refer to the epoc® System Manual.



alere.com

Epocal Inc.
2060 Walkley Road
Ottawa, ON K1G 3P5 Canada
1-613-738-6192
1-613-738-6195 Fax
www.epocal.com

Distributed by:
Alere North America, Inc.
30 S. Keller Road, Suite 100
Orlando, FL 32810 USA
1-877-441-7440 (US)
1-321-441-7200 (Outside US)